



Please see the bulletin below. Use these quick links to navigate directly to the relevant topic for your child without having to scroll down.

1. [Whole School – Stars of the Week](#)
2. [Whole School – Keeping our Community Safe](#)
3. [Whole School – Gallery of Learning](#)
4. [Nursery – Nursery News](#)
5. [Whole School – Diary Dates](#)

1. **Recipients: Whole School** **Date: 14-May-21**

**Action Required: Information**

### Stars of the Week

Well done to all our stars of the week this week. We have been so impressed by all the hard work and effort that has gone into achieving this award.



Year Group	Name	Name
Reception	Lola	Johovia
Year 1	Riana	Chloe
Year 2	Esmay	Mia
Year 3	Lucy	Savannah
Year 4	Arthur	Felix
Year 5	Harry S	Toby
Year 6	Robert	Jackson

## IMPORTANT - May 17th Covid



Dear GGA families,

As you know there will be some easing of Covid restrictions nationally on Monday 17th May.

However, in order to maintain our high levels of safety for staff, children and families, and in light of the fact that we are still in the midst of a global pandemic, there will be **NO CHANGES** to the Covid rules for children, staff and parents at GGA.

- all adults must wear masks when entering the school car park or pedestrian area and remain fully masked (even if talking to another adult)
- If adults are exempt from wearing a mask, they should wear a lanyard and wait in a safe place in the school car park, away from others
- parents should arrive at the time given for their children and queue up with the correct class or bubble
- adults and children should leave the school grounds and surrounding pavement area immediately after collecting children, leaving the car park and pavement clear for other families to safely leave
- adults dropping and collecting children at school must not come onto the playground, but drop their children on the other side of the red tape and leave through the car park gate
- if any family member has any Covid symptoms at any time, a PCR test must be taken and the household must self-isolate until a negative test result has been obtained

We have not had to close any of our bubbles so far at GGA and we very much hope, that with everyone's continued vigilance and following of rules and guidelines, this will continue to be the case.

Many thanks for your support

The GGA team



**Reception**

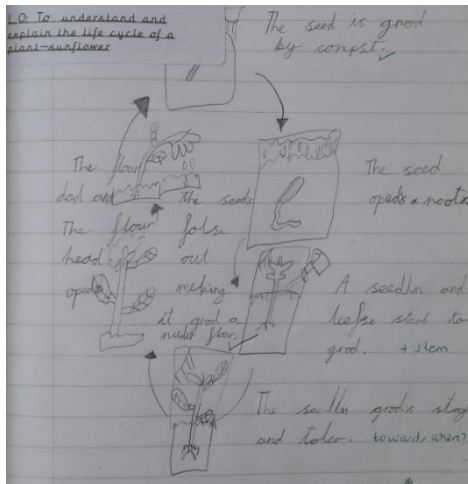
All the children in Reception had lots of fun at the park this week!

**Year 1**

This week in year 1 we have been learning about the continents. We have used Chatter Pix on our iPads to talk about some of the continents.

Please go to Year 1's class page on the website to watch the short video.

<https://www.georgegrenville.co.uk/year-1.html>



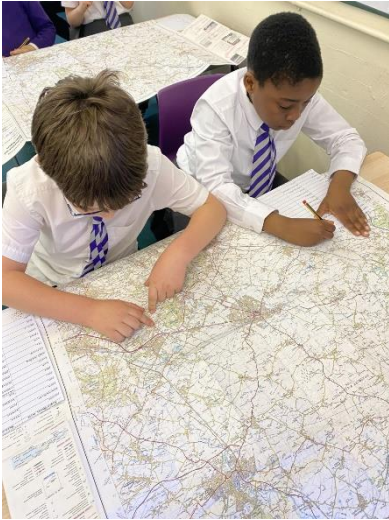
**Year 2**

A little snapshot of some of the work Year 2 have been doing: using tone to show light and shadow, learning subtraction with "swapsies" and learning about the life cycle of plants.

**Year 3**

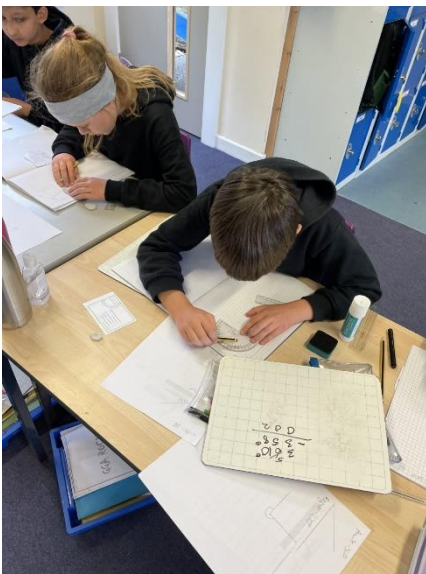
Year 3 have been learning a new game called "Spelling Bam" to help them learn their spellings.





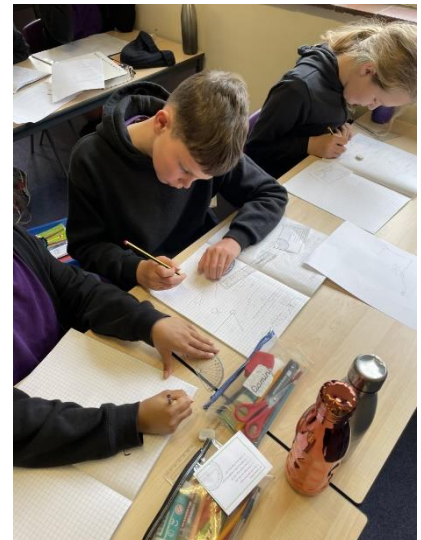
#### **Year 4**

Year 4s worked hard in their history lesson this week. They used Ordnance Survey maps to find place names from over the country that link to the Anglo-Saxon era. For example, Buckingham - ham means village, so we discussed the idea of Buckingham starting as a village in Anglo-Saxon times and growing into a town over time.



#### **Year 5**

Year 5 have been persevering whilst measuring and drawing angles.



#### **Year 6**

Year 6 spent time with Next Level Coaching in a well-being session, focusing on physical and mental fitness, and on what we eat.

### Nursery Corner

We have been busy planning for our garden and have already started off some of our flowers and vegetables seeds ready for planting out. Due to the late frosts this year we decided to create our own indoor greenhouse in a lovely sunny spot in our quiet room.



**School Calendar**

Coming up...

Wednesday 19<sup>th</sup> May at 7.30pm – FROGGS Meeting

Thursday 27<sup>th</sup> May – Non-Uniform Day and last day of the half term.

Monday 21<sup>st</sup> June – Midsummer Madness Non-Uniform Day

Please keep visiting the calendar page on our website to ensure you have all the most up to date information.

<https://www.georgegrenville.co.uk/school-calendar.html>

Mon	Tue	Wed	Thu	Fri	Sat	Sun
1	2	3	4	5	6	7
8	9	10	11	12	13	14
15	16	17	18	19	20	21
22	23	24	25	26	27	28
29	30	31				