

Key Vocabulary

Texture	The surface of the art work
Light	Using low pressure when mark making
Shadow	Dark area created by where the light hit
Tone	Light and dark values
Line	Straight or curved marks between two points.

Previous learning:

- Hatching and cross hatching to show tone and texture.
- Accurate drawing of people including proportion and placement.

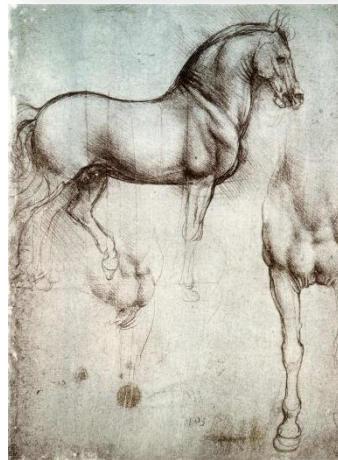
Key Learning

I can use shading to show shadow and light.

I can use different hardness of pencils to show line.

I can use different hardness of pencils to show tone.

I can use different hardness of pencils to show texture.



Leonardo da Vinci

Leonardo da Vinci liked to use a red chalk called sanguine for many of his drawings. He also used black chalk or a combination of the two.

